

An update on trends in surface radiation over the U.S. as determined from the seven SURFRAD BSRN sites

John A. Augustine¹ and Gary Hodges²

¹NOAA ESRL Global Monitoring Division

²CIRES, University of Colorado



Data are from the U.S. SURFRAD BSRN Surface Radiation Budget Network



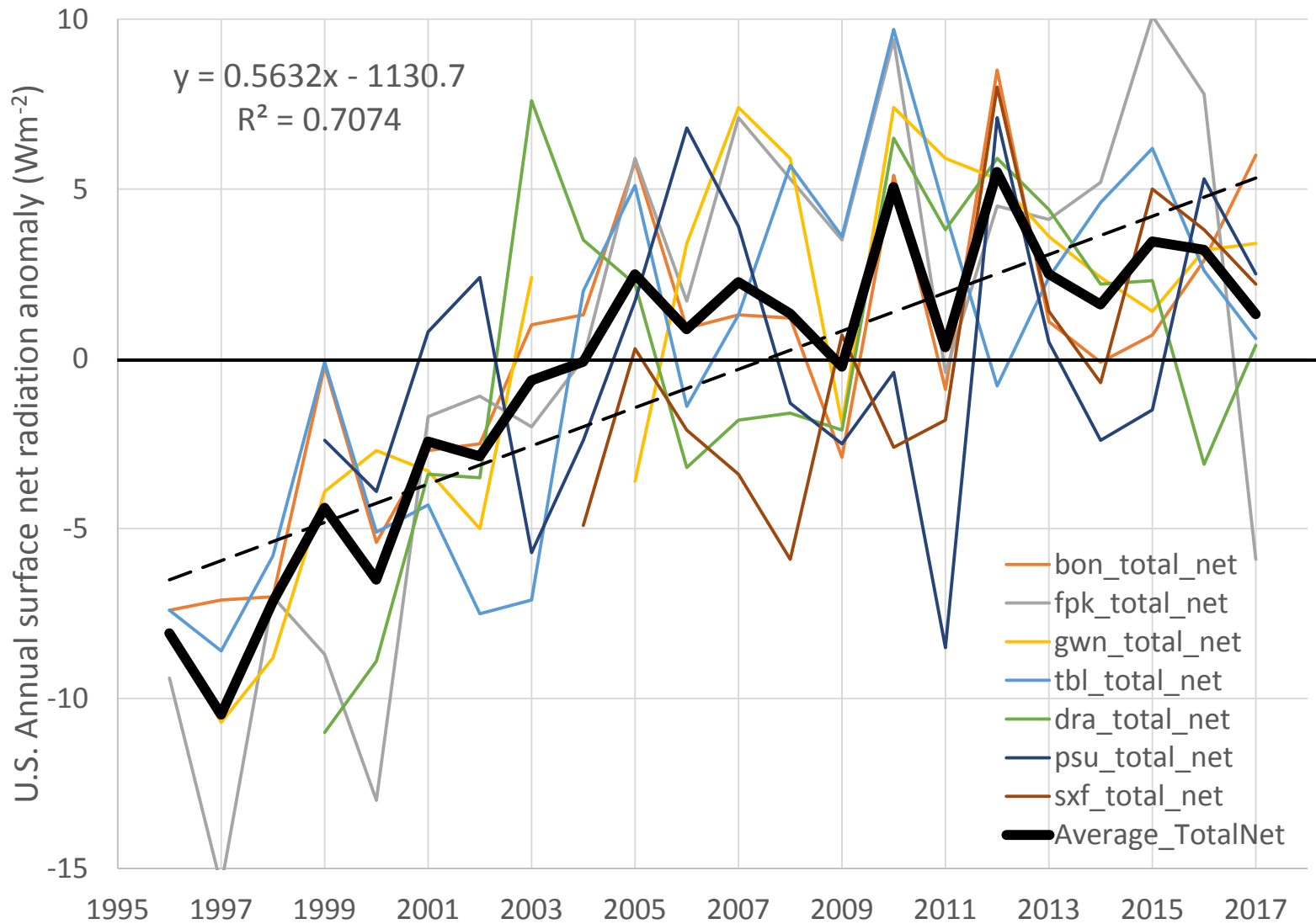
Began operations on 1 Jan. 1995

Trend Analysis

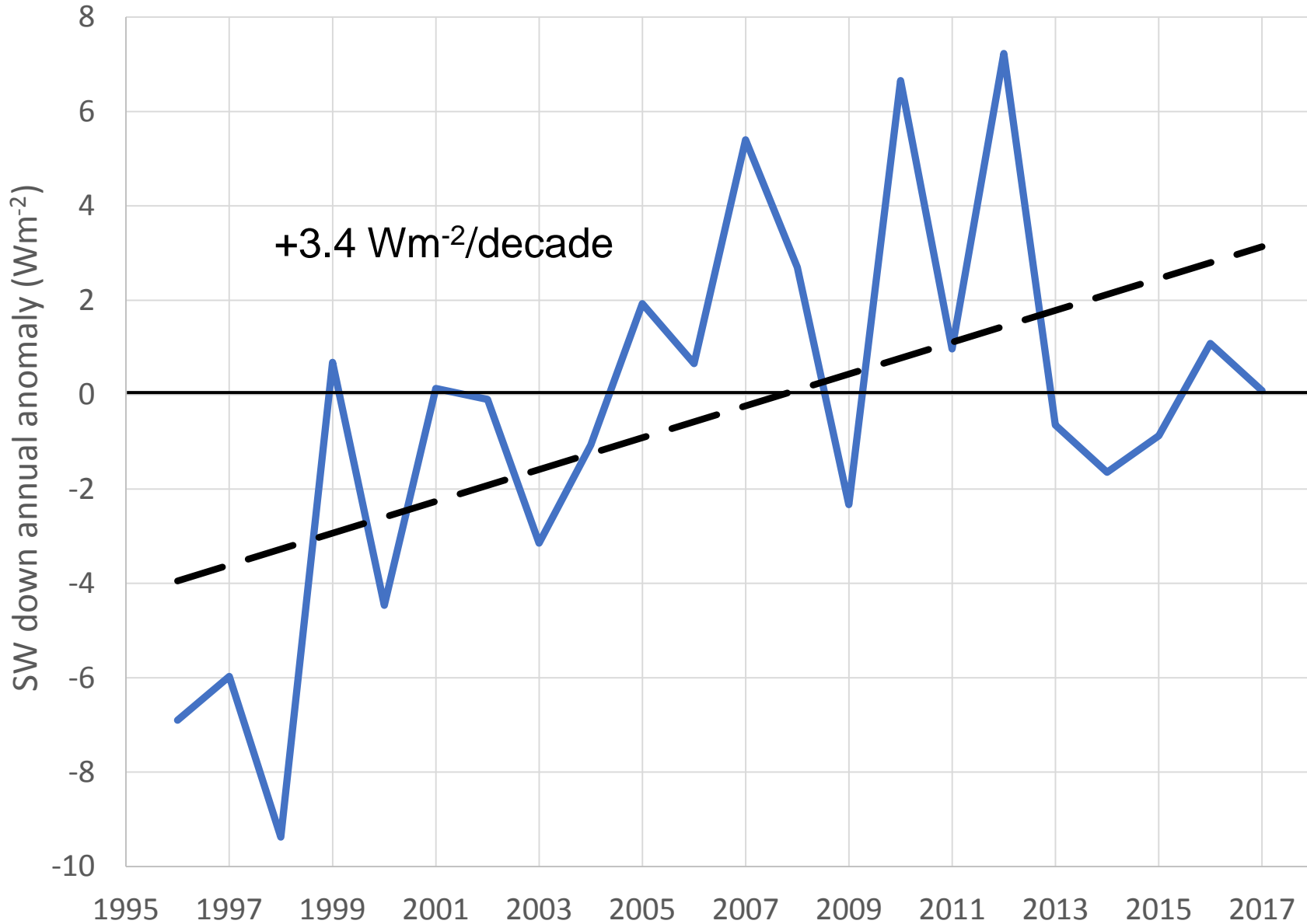
- Monthly averages computed for each station
- Annual averages computed from monthly means
- Station annual averages were normalized to zero by computing annual anomalies from their long-term mean
- The average of all stations' anomalies for each year is considered a proxy for the U.S.

U.S. total surface net radiation annual anomalies

$$SW\downarrow - SW\uparrow + LW\downarrow - LW\uparrow$$


















U.S. short wave down annual anomalies



Martin Wild's 2012 review of observed dimming and brightening at the surface

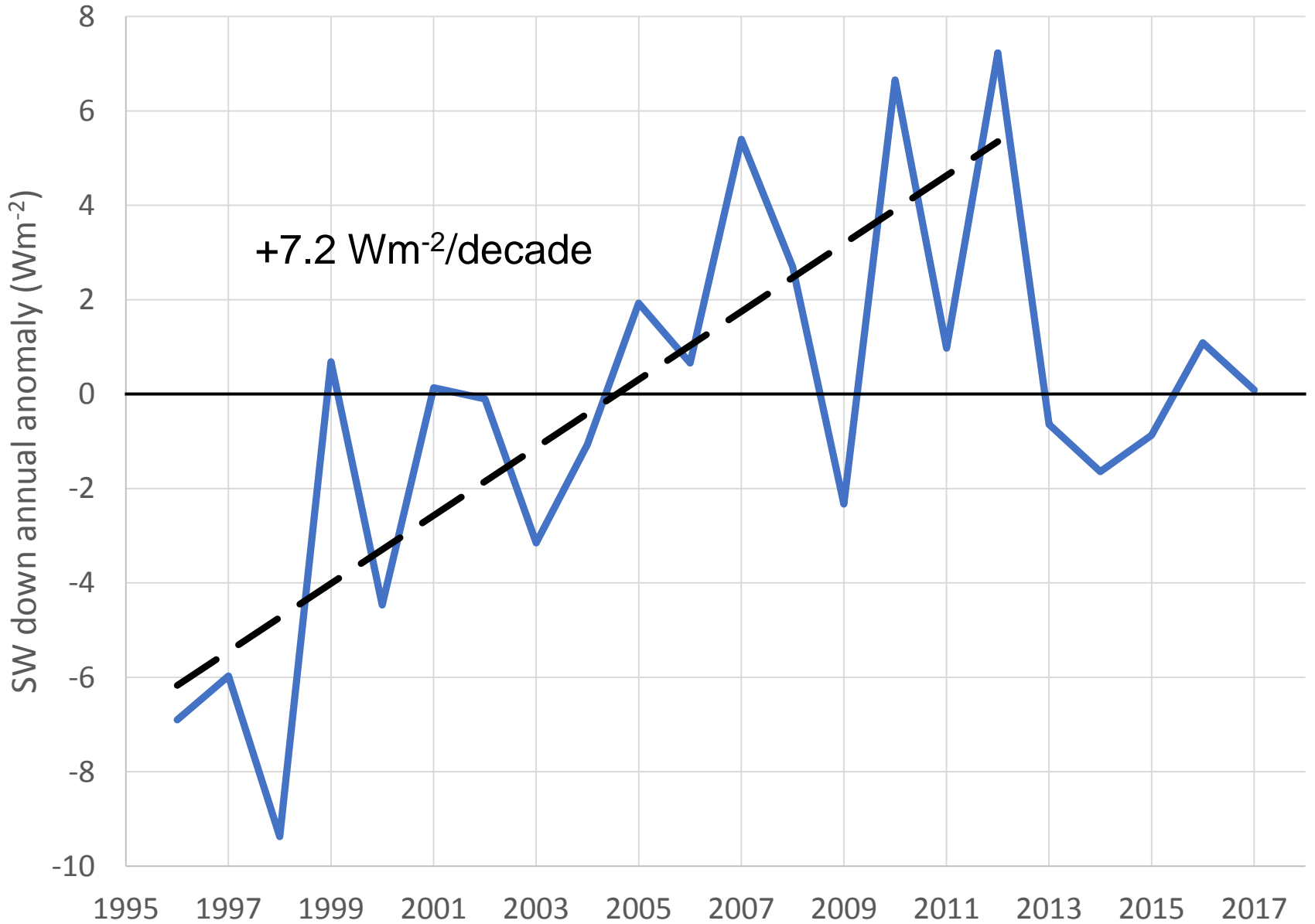
— SURFRAD —

| | 1950s-1980s | 1980s-2000 | after 2000 |
|-----------------------|--|---|---|
| USA | -6  | 5  | 8  |
| Europe | -3  | 2  | 3  |
| China/Mongolia | -7  | 3  | -4  |
| Japan | -5  | 8  | 0  |
| India | -3  | -8  | -10  |

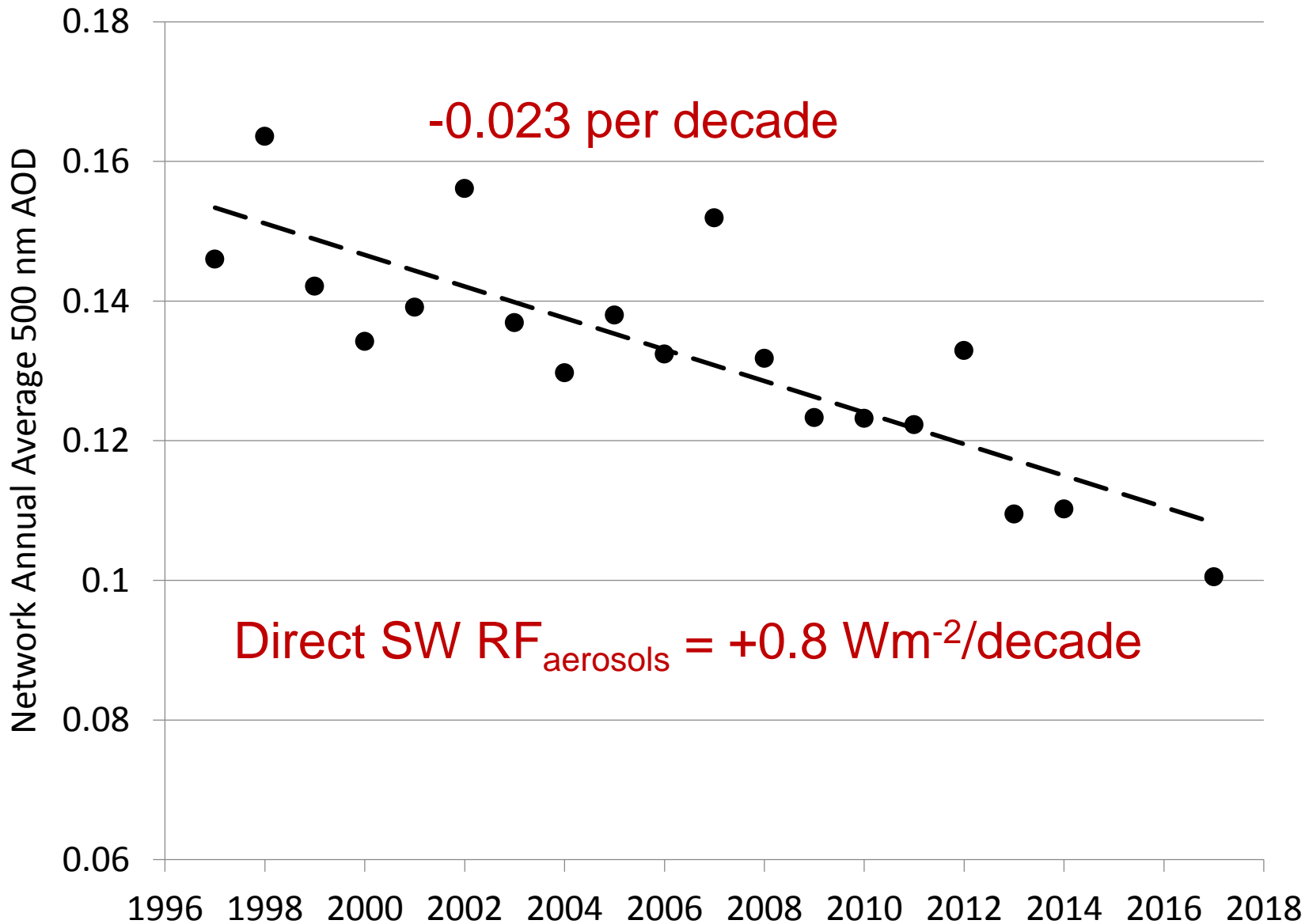
Trends in $Wm^{-2}/decade$

From: Wild (2012) *Enlightening Global Dimming and Brightening*,
<https://doi.org/10.1175/BAMS-D-11-00074.1>

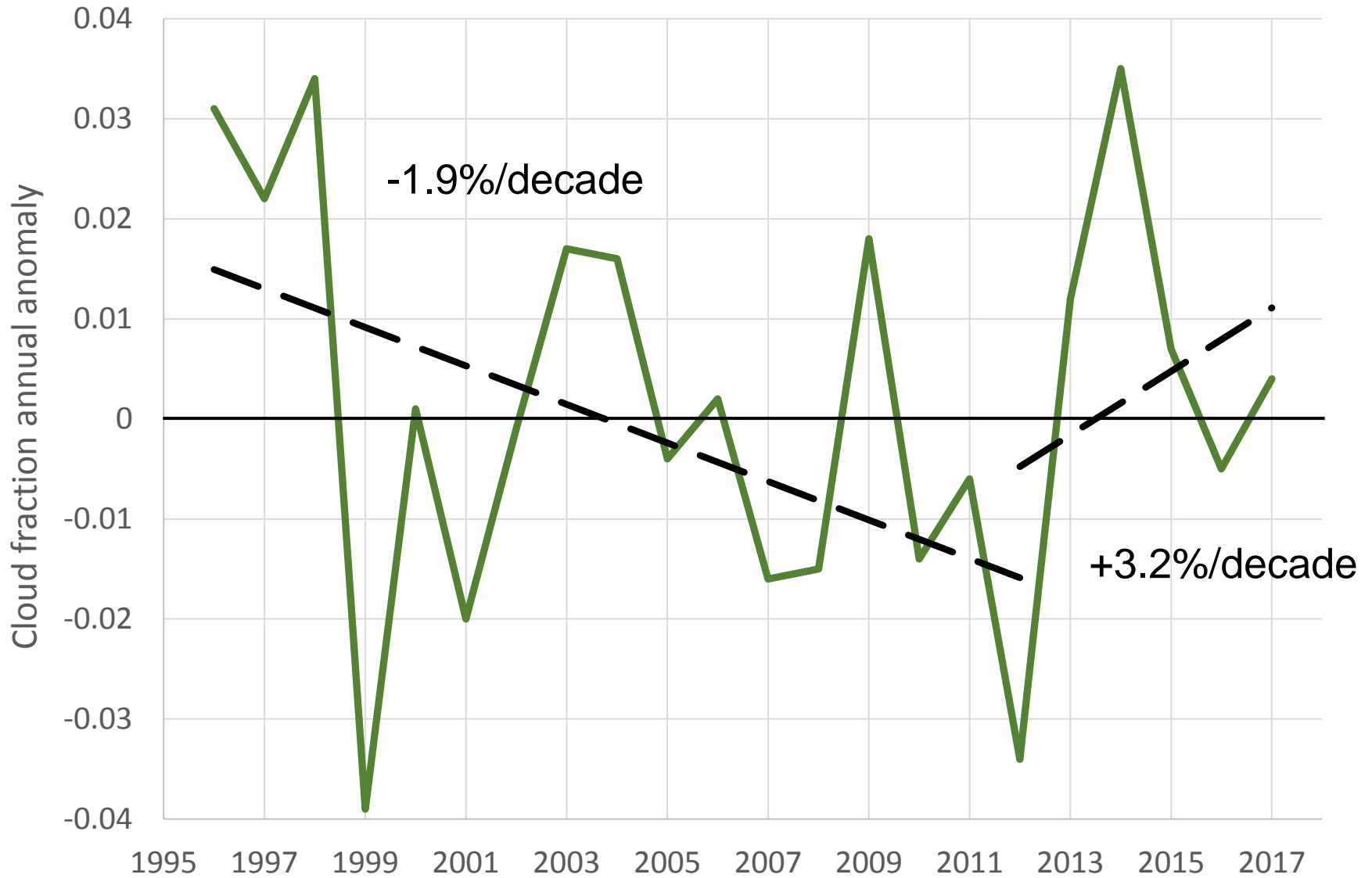
U.S. short wave down annual anomalies



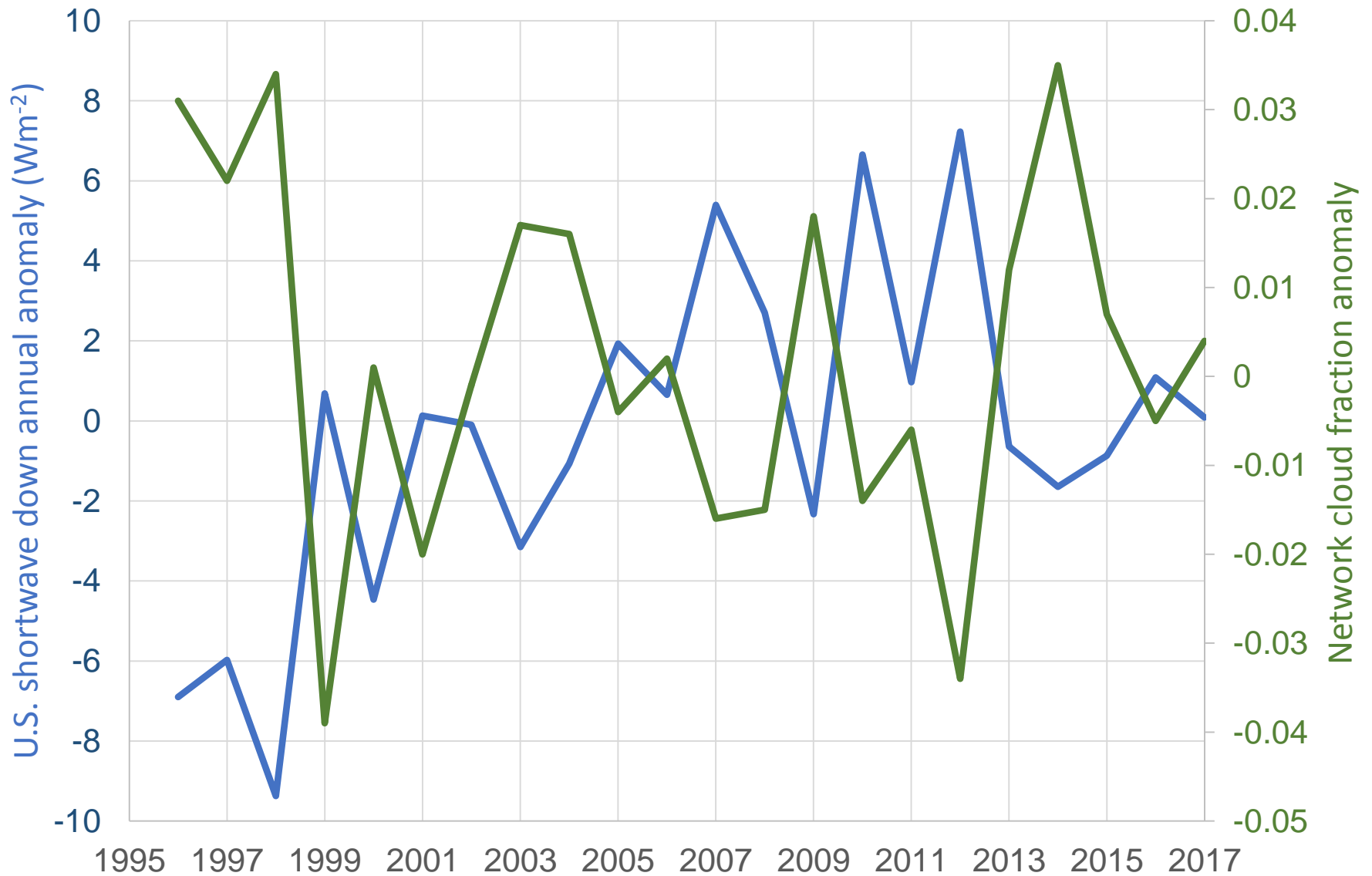
U.S. average annual 500 nm Aerosol Optical Depth



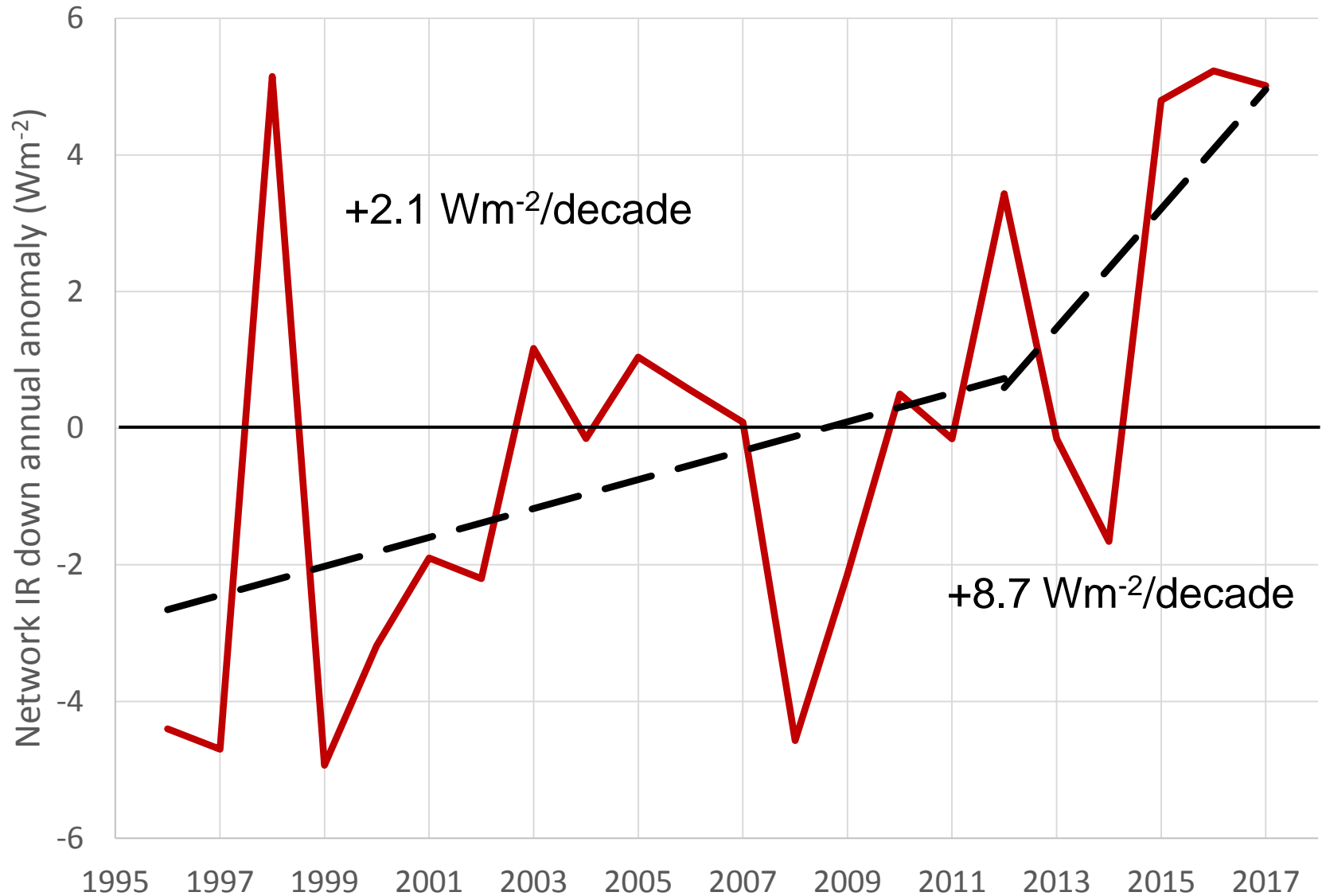
U.S. sky-cover annual anomalies



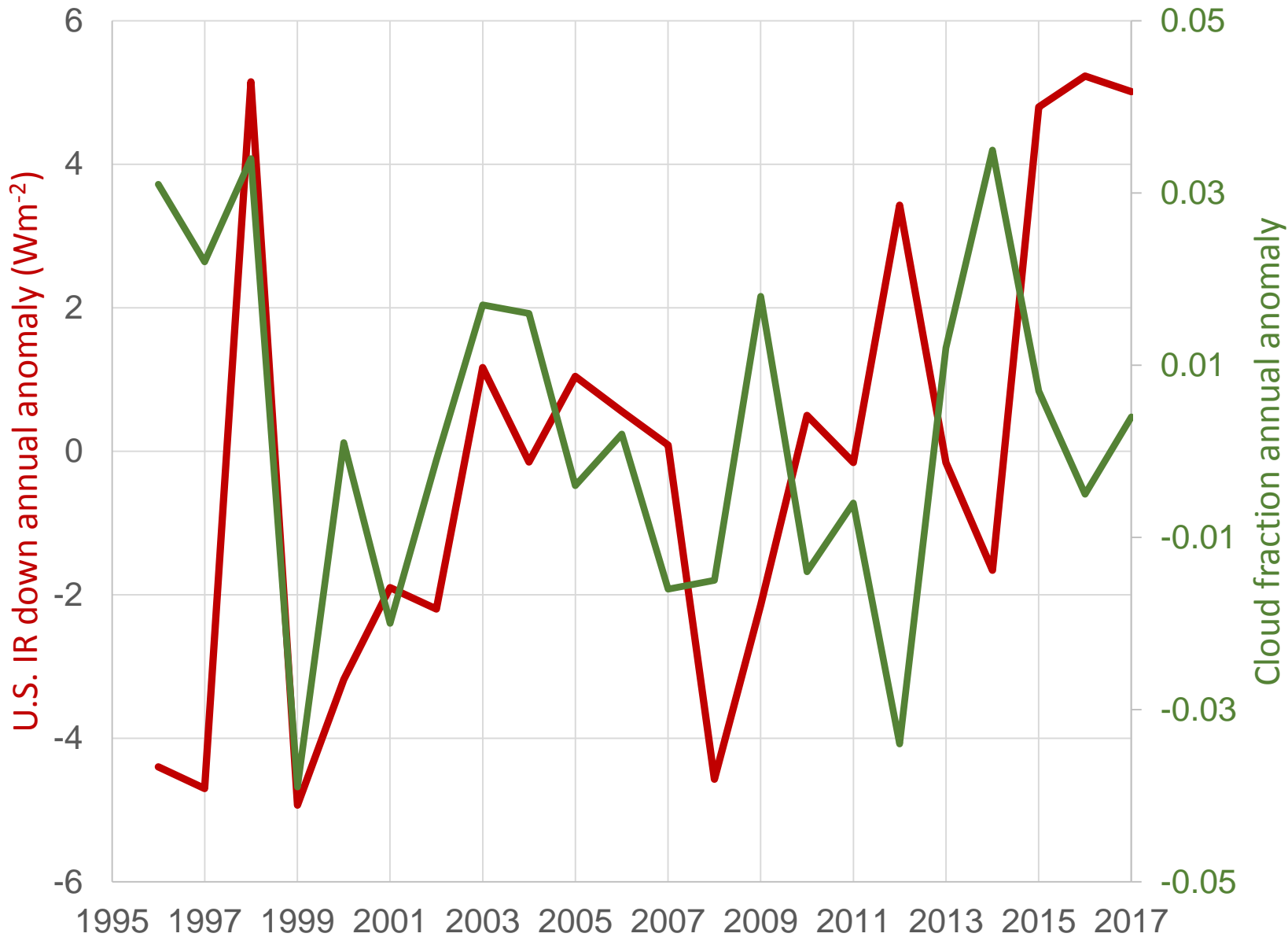
Shortwave and sky cover annual anomalies anticorrelated



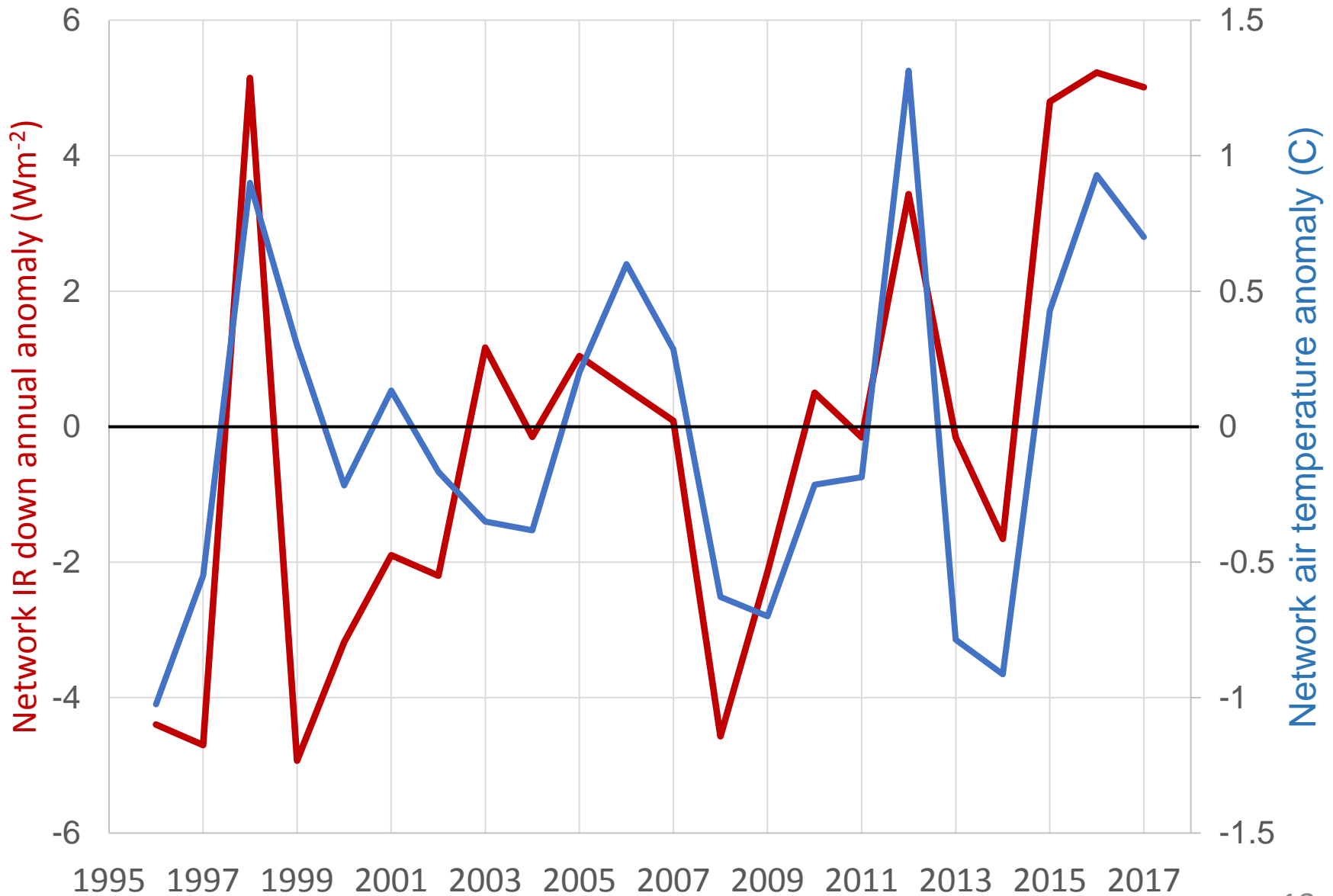
Long wave down annual anomalies



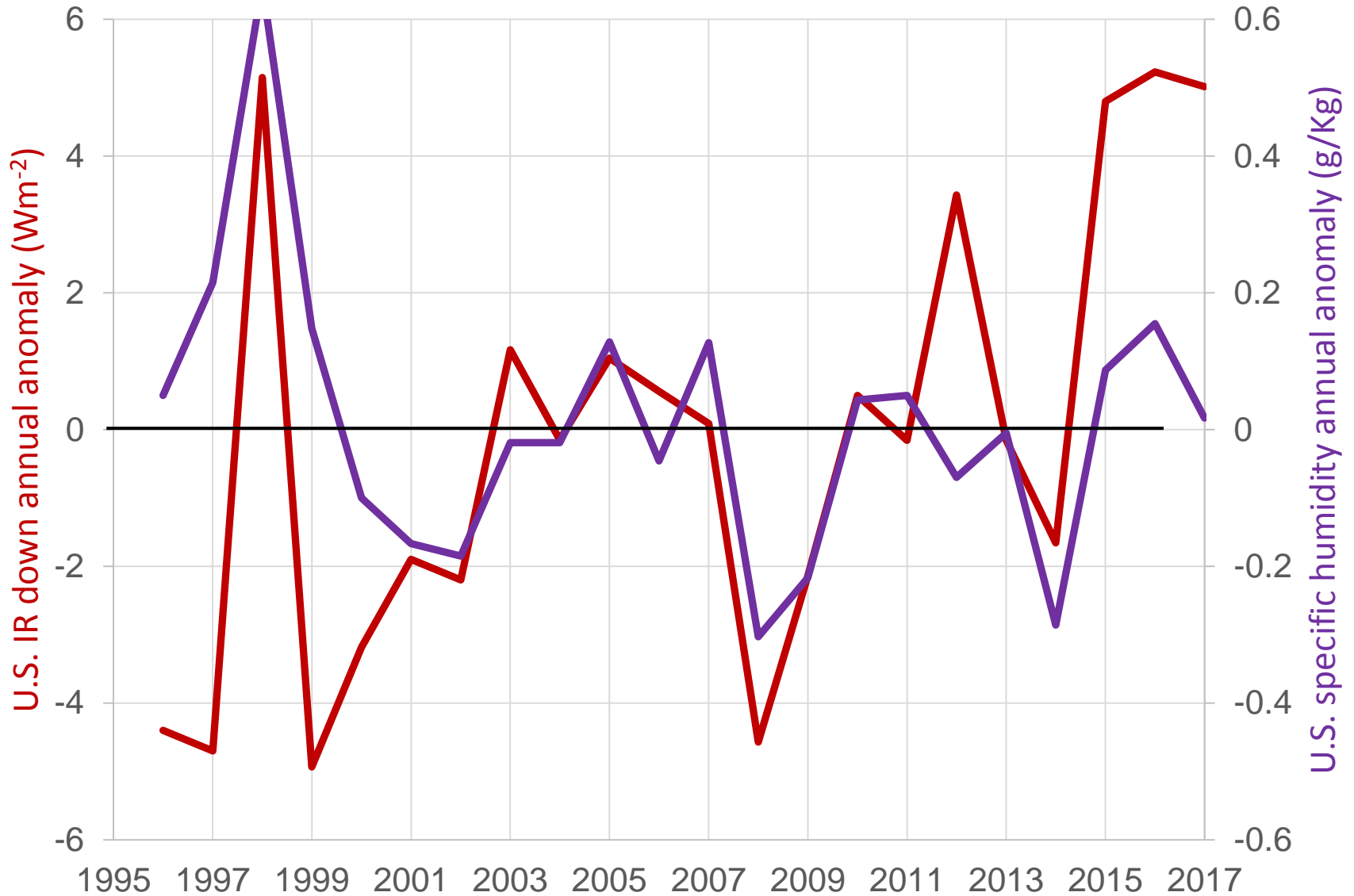
Long wave down and cloud fraction annual anomalies



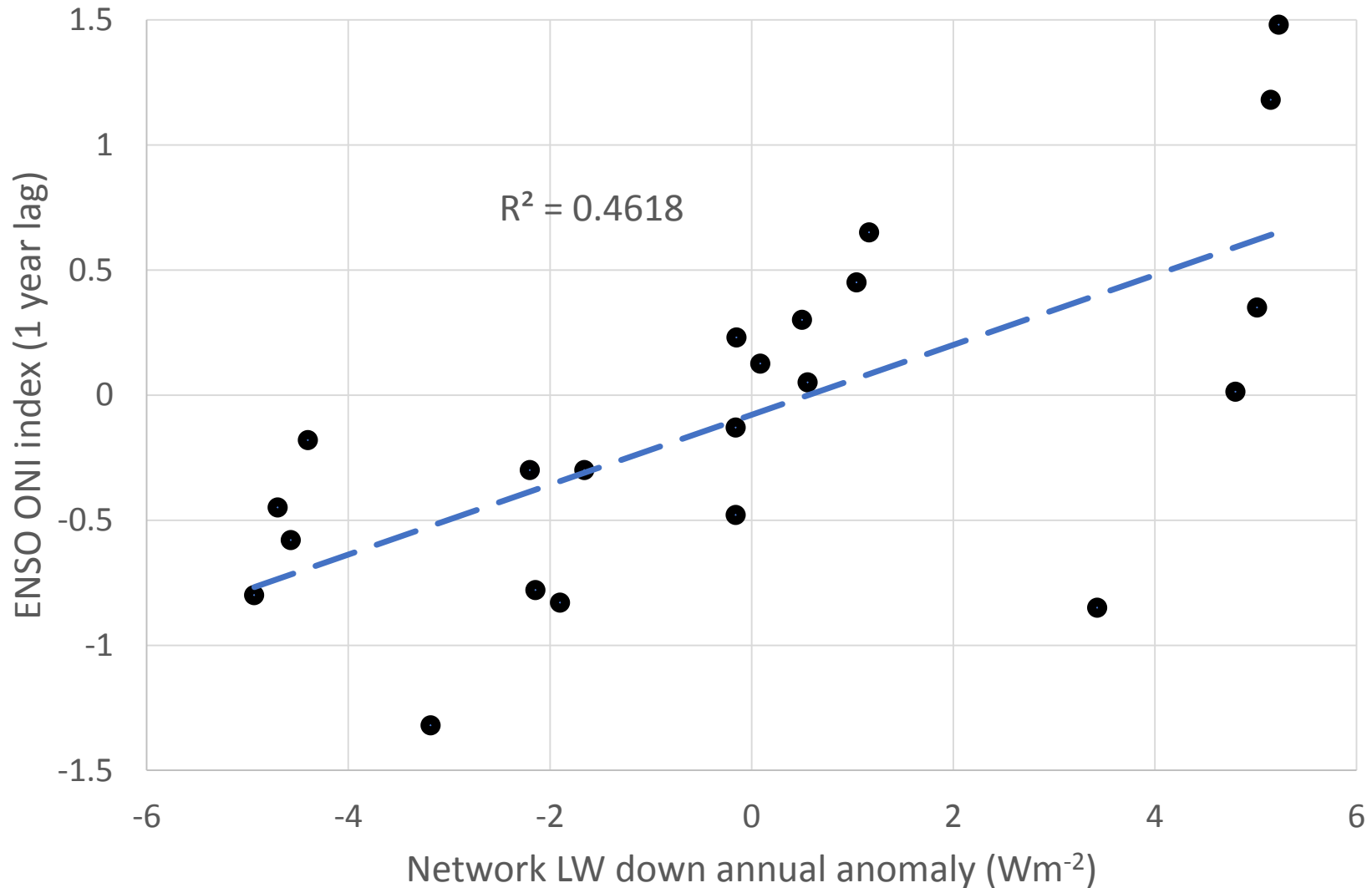
Long wave down and air temperature annual anomalies



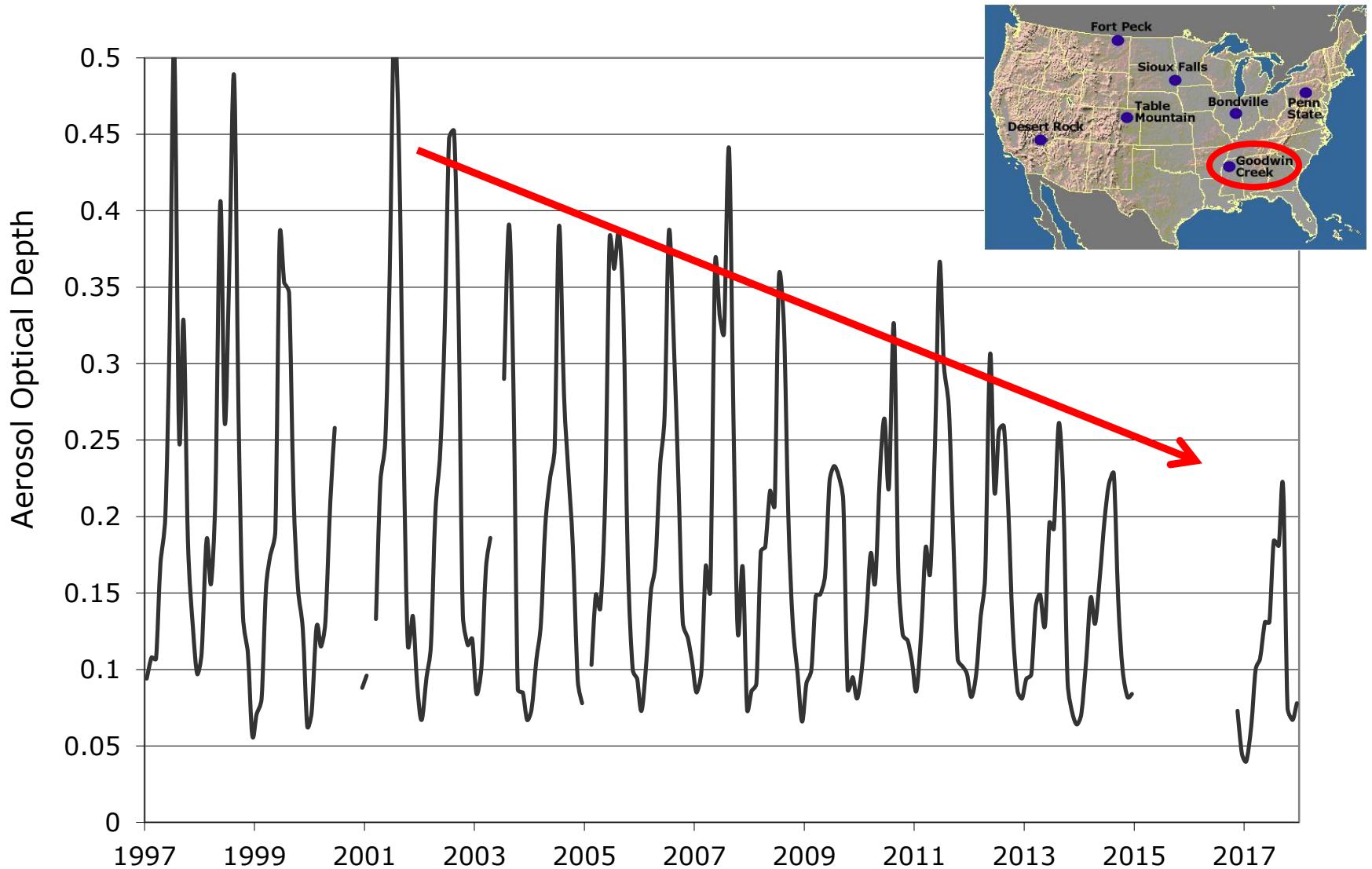
Long wave down and specific humidity annual anomalies



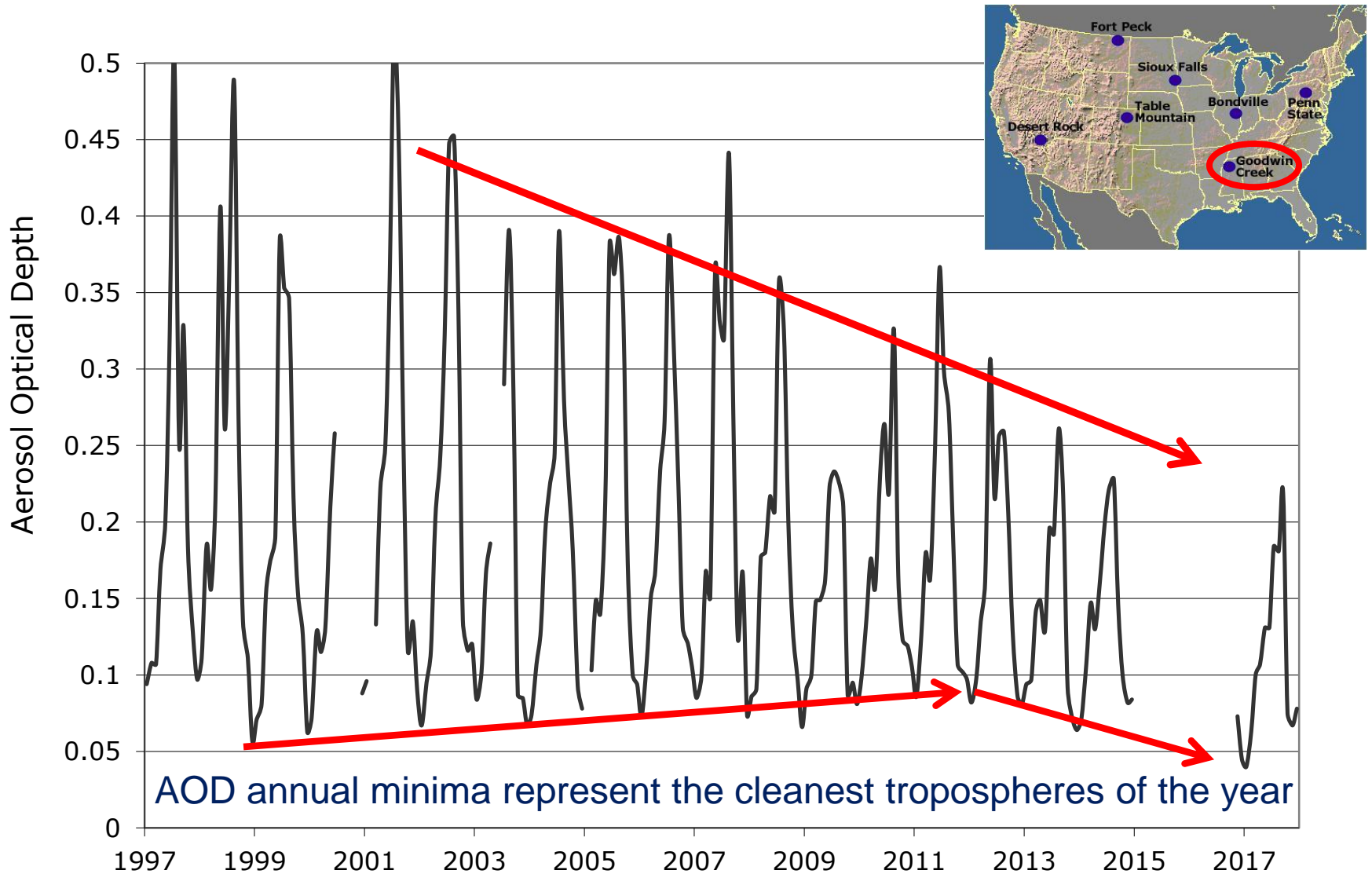
Nearly 50% of the variance of long wave down is explained by the variability of the ENSO ONI index



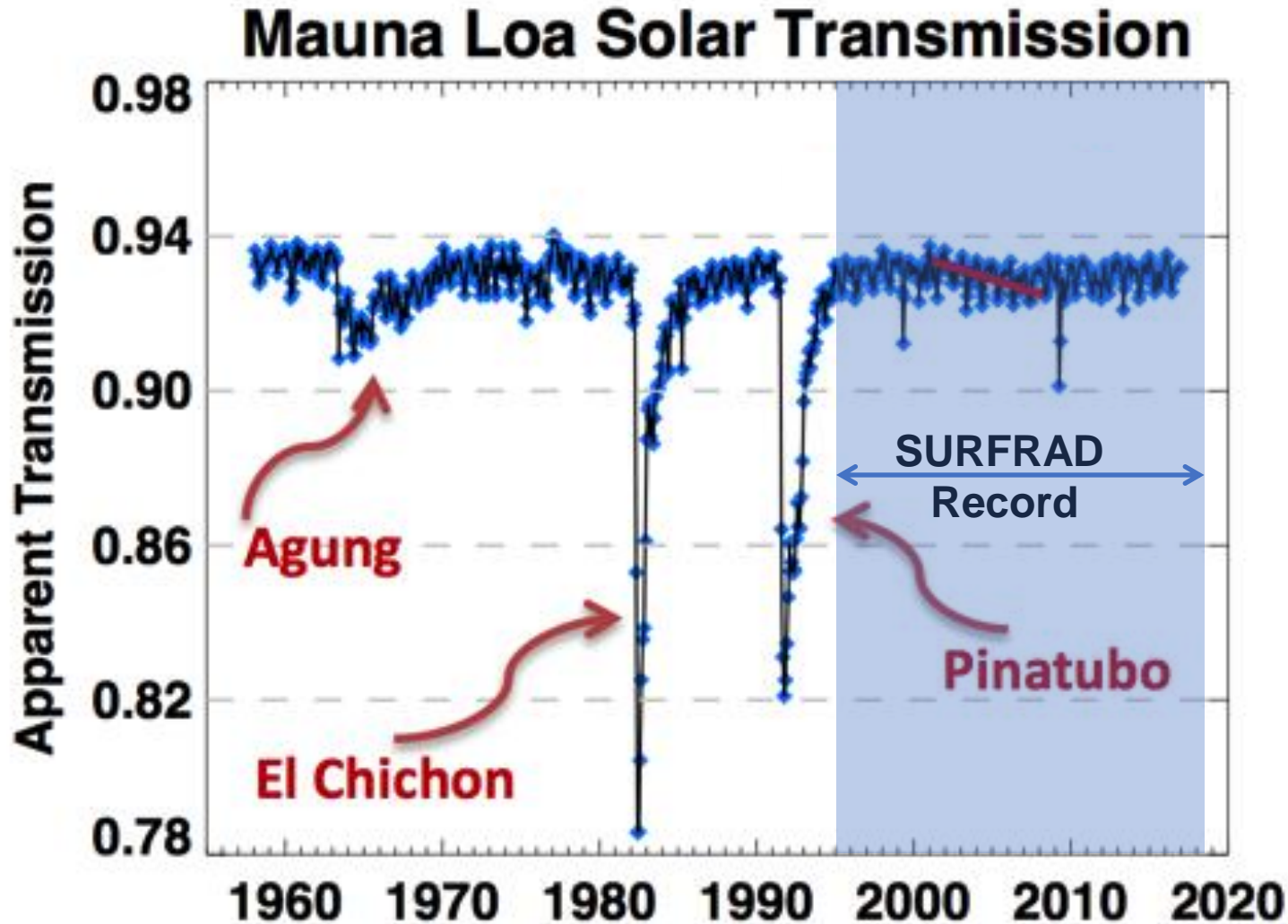
Goodwin Creek monthly average AOD at 500 nm



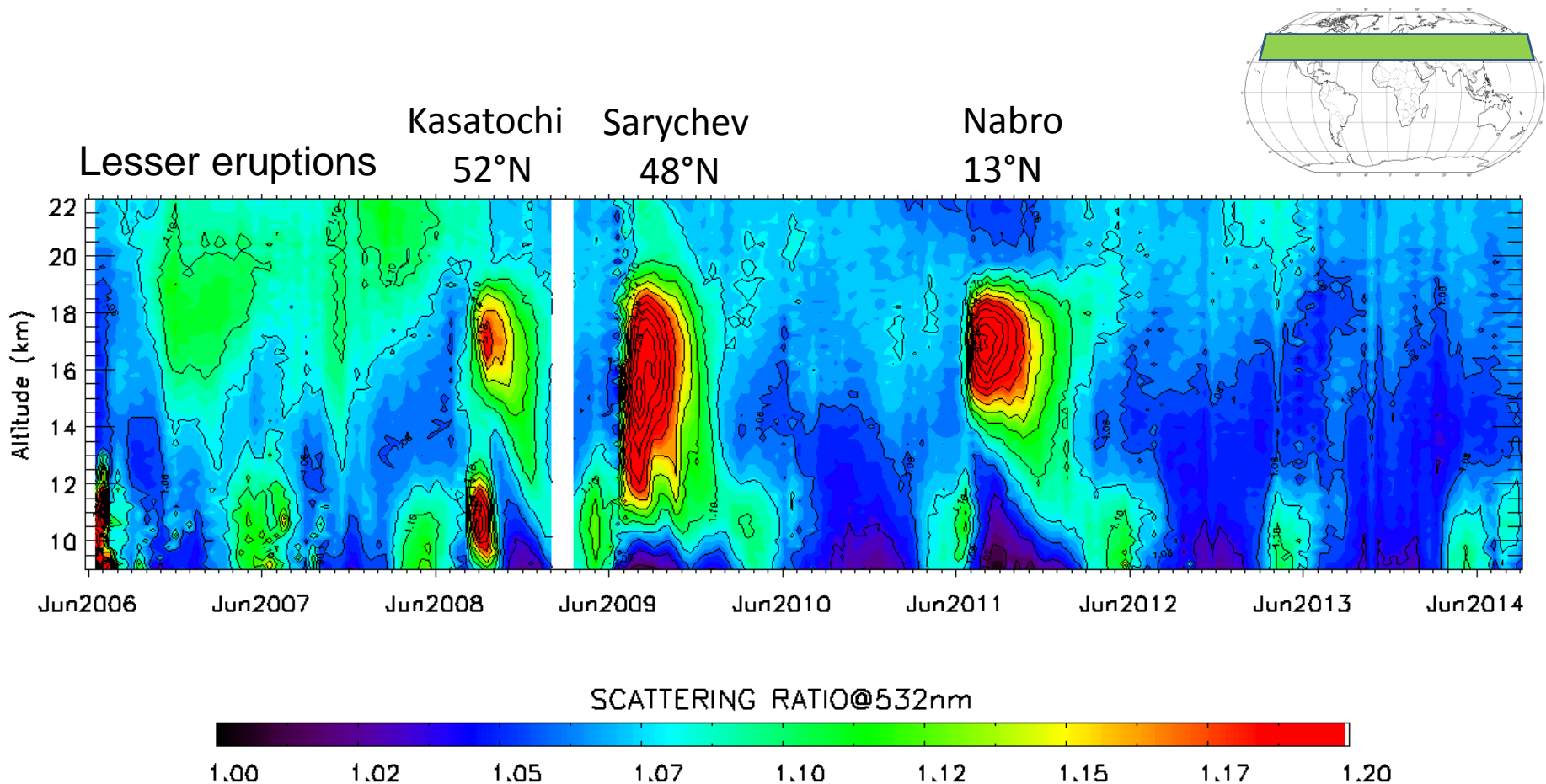
Goodwin Creek monthly average AOD at 500 nm



Until recently it was thought that only large tropical volcanic eruptions affected the stratosphere



Time series of the CALIOP space lidar 532 nm scattering ratio for the UTLS (30° to 60°N)



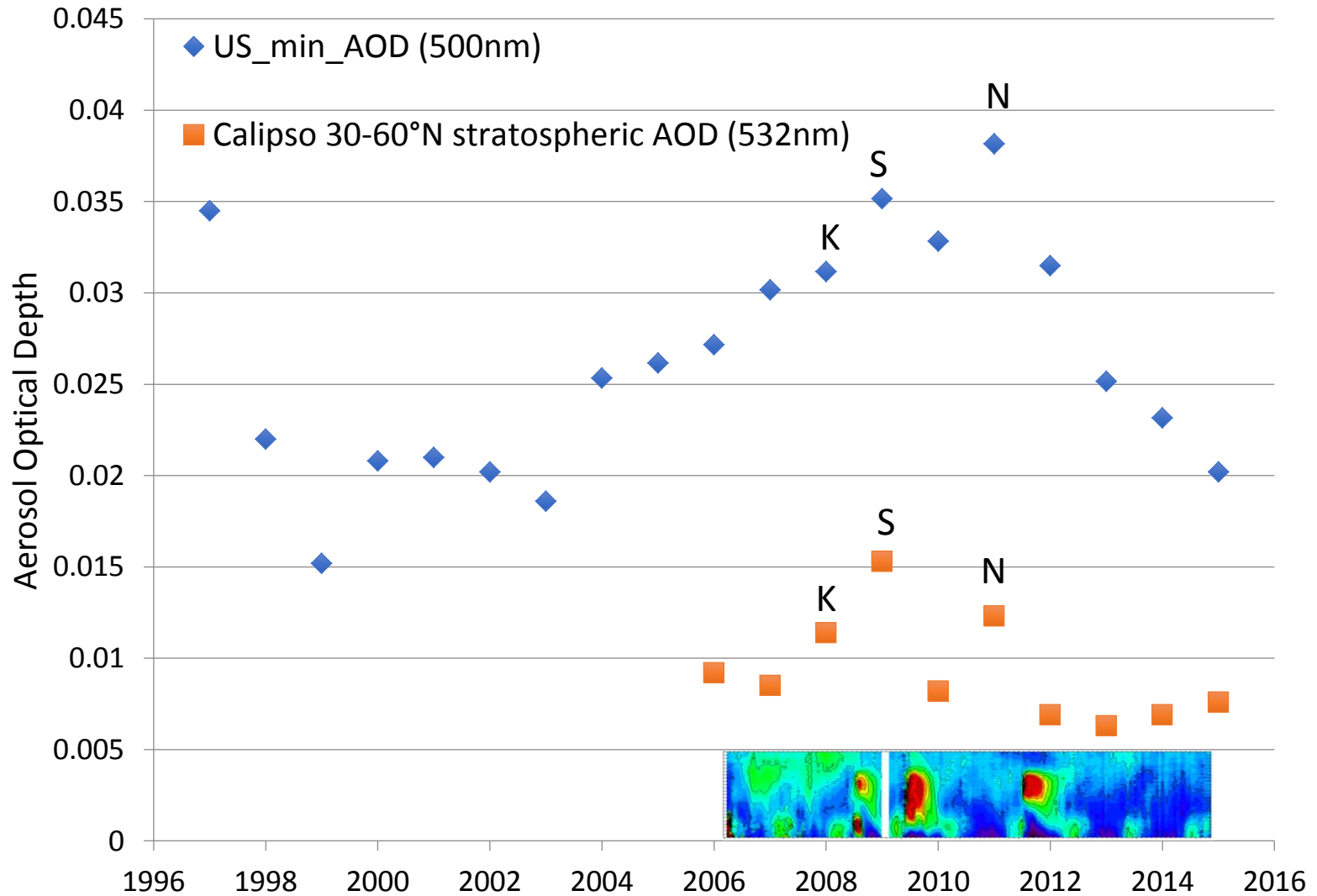
Provided by Jean-Paul Vernier, NASA Langley

Volcanic eruptions 2000-2011

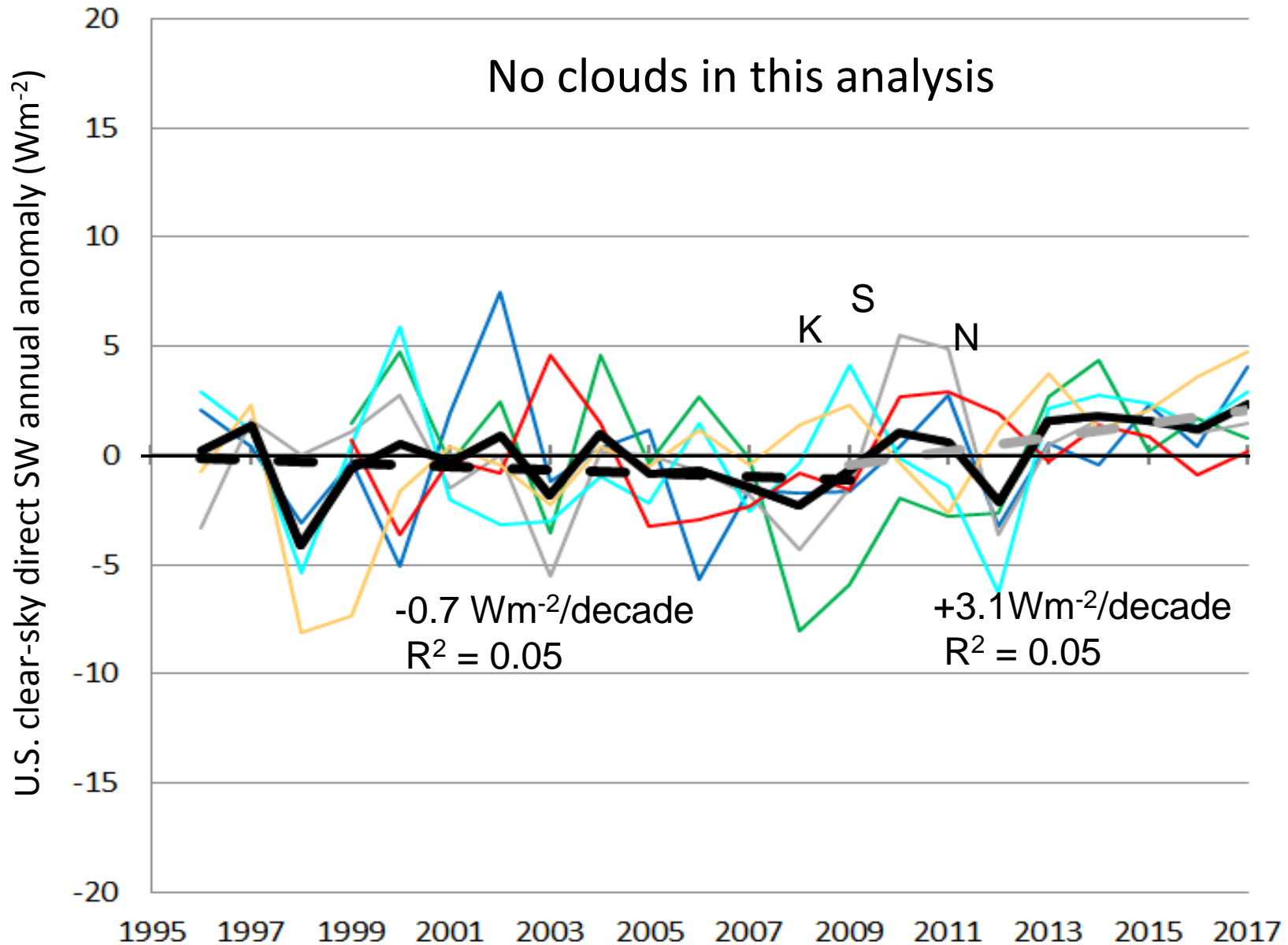
Table 1 | Volcanic eruptions in the 21th century that affect (or have the potential to affect) the aerosol loading of the stratosphere.

| Volcano | | Date | Lat. | Long. | VEI* | SO ₂ (Tg) |
|-----------------------|----|-------------|-------|--------|------|----------------------|
| Ulawun | Ul | 29 Sep 2000 | 5° S | 151° E | 4 | † |
| Sheveluch | Sh | 22 May 2001 | 57° N | 161° E | 4 | † |
| Ruang | Ru | 25 Sep 2002 | 2° N | 125° E | 4 | 0.03 (ref. 50) |
| Reventador | Ra | 3 Nov 2002 | 0° S | 78° W | 4 | 0.07 (ref. 50) |
| Anatahan | At | 10 May 2003 | 16° N | 146° E | 3 | 0.03 (ref. 50) |
| Manam | Ma | 27 Jan 2005 | 4° S | 145° E | 4 | 0.09 (ref. 50) |
| Sierra Negra | Si | 22 Oct 2005 | 1° S | 91° W | 3 | † |
| Soufrière Hills | So | 20 May 2006 | 17° N | 62° W | 3 | 0.2 (ref. 51) |
| Rabaul | Rb | 7 Oct 2006 | 4° S | 152° E | 4 | 0.2 (ref. 50) |
| Jebel at Tair | Je | 30 Sep 2007 | 16° N | 42° E | 3 | 0.08 (ref. 52) |
| Chaitén | Ch | 2 May 2008 | 43° S | 73° W | 4 | 0.01 (ref. 53) |
| Okmok | Ok | 12 Jul 2008 | 53° N | 168° W | 4 | 0.1 (ref. 52) |
| Kasatochi | Ka | 7 Aug 2008 | 52° N | 176° W | 4 | 1.7 (ref. 52) |
| Redoubt | Re | 23 Mar 2009 | 60° N | 153° W | 3 | 0.01 (ref. 54) |
| Sarychev | Sa | 12 Jun 2009 | 48° N | 153° E | 4 | 1.2 (ref. 55) |
| Eyjafjallajökull | Ey | 14 Apr 2010 | 64° N | 20° W | 4 | † |
| Merapi | Me | 5 Nov 2010 | 8° S | 110° E | 4 | 0.4 (ref. 56) |
| Grimsvötn | Gr | 21 May 2011 | 64° N | 17° W | 4 | 0.4 (ref. 57) |
| Puyehue-Cordón Caulle | Pu | 6 Jun 2011 | 41° S | 72° W | 5 | 0.3 (ref. 57) |
| Nabro | Na | 12 Jun 2011 | 13° N | 42° E | 4 | 1.5 (ref. 57) |

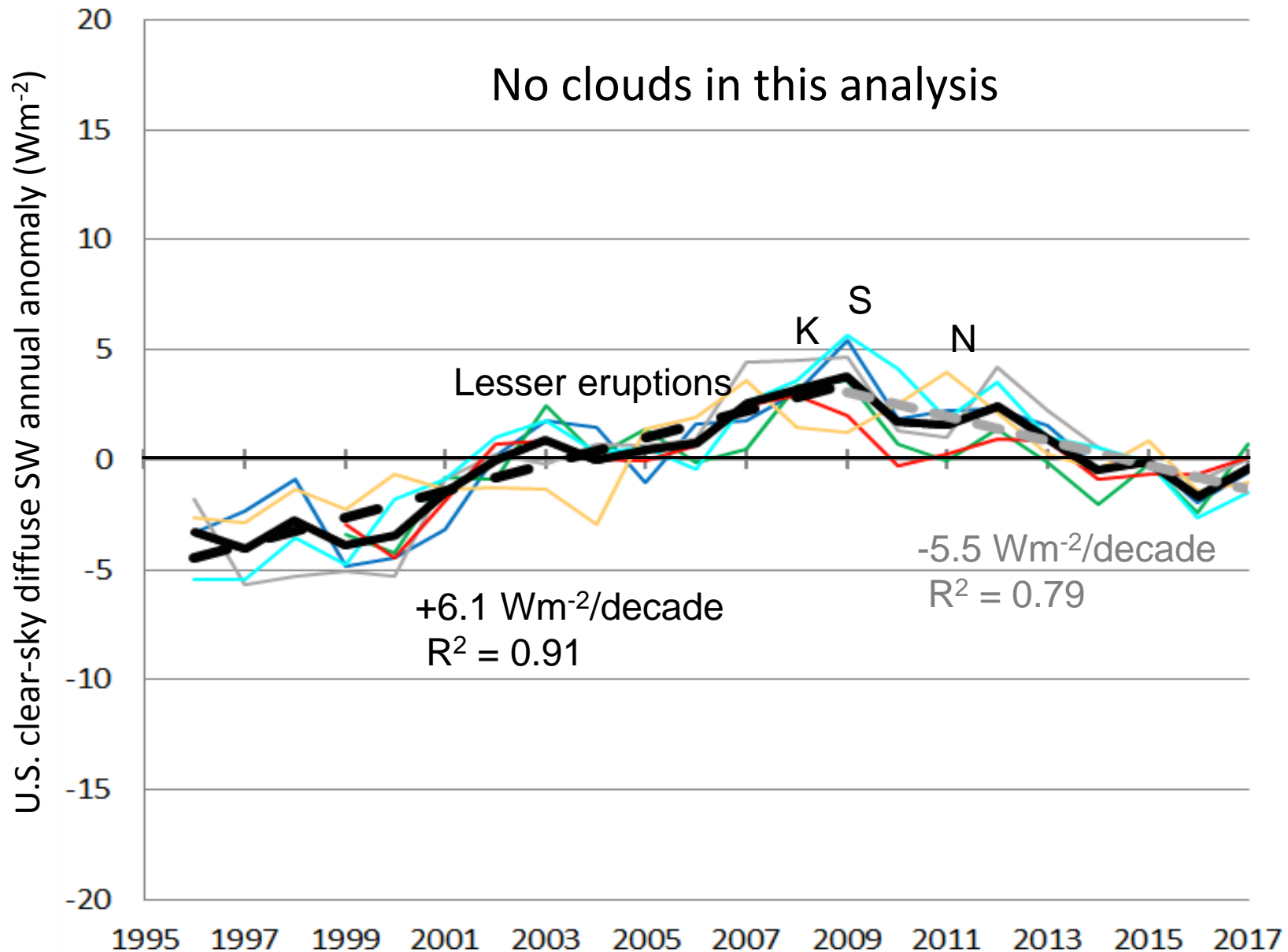
U.S. annual AOD minima and UTLS AOD from CALIOP



RadFlux: Clear-Sky-Equivalent Direct short wave



RadFlux: Clear-Sky-Equivalent Diffuse short wave



Summary

- Shortwave brightening of $+7.2 \text{ Wm}^{-2}/\text{decade}$ over the U.S. from 1996 to 2012
- Following 2012, there was a rapid return to “normalcy” -- Has brightening ended over the U.S.?
- U.S. shortwave brightening and dimming has been primarily attributed to systematic changes in cloud cover
- A systematic reduction in aerosols accounted for only a small part of the brightening
- LW down variability over the U.S. appears to be governed by surface air temperature, cloud cover, water vapor variability and ENSO
- Interannual variability of AOD minima and clear-sky diffuse seem to mimic lower stratospheric AOD variability

